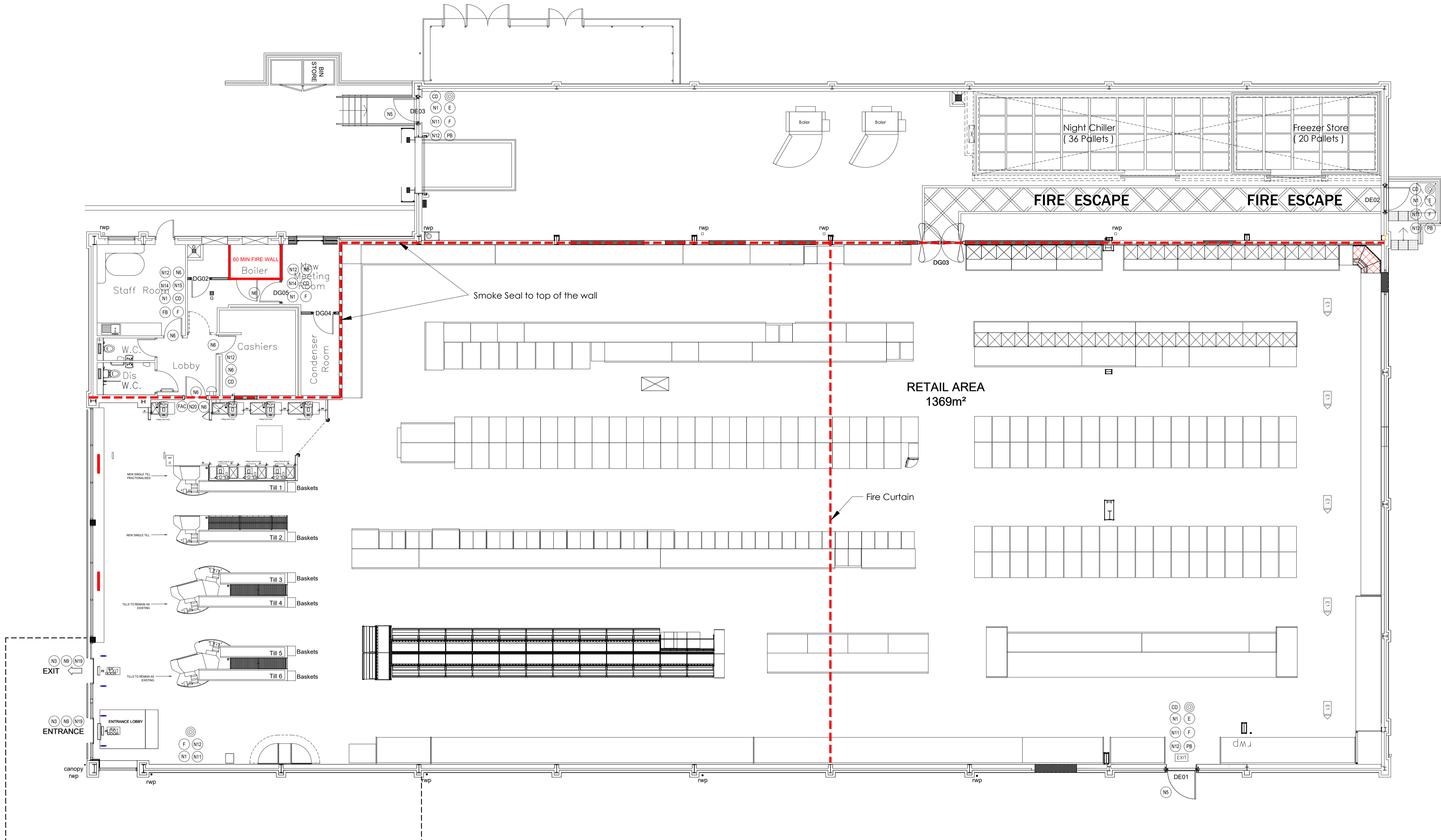


Rev.	Date	Description	Drawn	Chkd
C01	05.07.25	FINAL DRAWING ISSUE	SP	DM
C02	05.08.25	ADDED FIRE WALL DETAIL	GK	SB



- | | | |
|---|--|--|
| <ul style="list-style-type: none"> N1 GENERAL FIRE NOTICE. Ref 1/1033/JK N2 "EMERGENCY EXIT ONLY" SIGN 450 x 100mm SELF ADHESIVE VINYL N3 "KEEP CLEAR" SIGN 200 x 200mm SELF ADHESIVE VINYL N4 DIRECTION ARROW SIGN WHITE ARROW ON BLUE CIRCLE ON WHITE SQUARE 200 x 200mm" N5 "FIRE EXIT KEEP CLEAR" SIGN 200 x 200mm MOUNTED EXTERNALLY N6 "FIRE DOOR KEEP CLOSED" SIGN 80 x 80mm SELF ADHESIVE N7 "FIRE DOOR KEEP CLOSED" SIGN 80 x 80mm N8 "FIRE DOOR KEEP LOCKED" SIGN 80 x 80mm N9 "AUTOMATIC DOORS" SIGN BLACK LETTERS ON WHITE 200 x 200 SELF ADHESIVE N10 FIRE ALARM CALL POINT SIGN 80 x 80mm SELF ADHESIVE N11 FIRE ALARM CALL POINT SIGN 150 x 200mm N12 "FIRE EXTINGUISHER" SIGN 150 x 200mm | <ul style="list-style-type: none"> N13 "FIRE EXTINGUISHER" SIGN 150 x 200mm SELF ADHESIVE N14 "NO SMOKING" SIGN 200 x 200mm N15 "FIRE BLANKET" SIGN 75 x 210mm N16 "MIND YOUR HEAD" SIGN 400 x 100mm N17 "MIND THE STEP" SIGN 400 x 100mm N18 "WAY IN / NO EXIT" SELF ADHESIVE VINYL SIGN N19 "WAY OUT / NO ENTRY" SELF ADHESIVE VINYL SIGN N20 "FIRE ALARM CONTROL PANEL" SIGN 200 x 150mm E1 DIRECTIONAL FIRE EXIT SIGN 600 x 200mm LEFT HAND E1 DIRECTIONAL FIRE EXIT SIGN 600 x 200mm RIGHT HAND E1 DIRECTIONAL FIRE EXIT SIGN 300 x 100mm LEFT HAND EXIT ILLUMINATED FIRE EXIT SIGN | <ul style="list-style-type: none"> PB PUSH BAR MECHANISM AND "PUSH BAR TO OPEN" SIGN 600 x 100mm (ON DOOR) E FIRE EXIT SIGN 705 x 150mm (ON DOOR) CD FIRE ALARM CALL POINT (BREAK GLASS UNIT) F FOAM SPRAY AFF FIRE EXTINGUISHER CD CARBON DIOXIDE FIRE EXTINGUISHER PB FIRE BLANKET SD SMOKE DETECTOR SDC VOID MOUNTED SMOKE DETECTOR WITH CEILING MOUNTED INDICATOR SDA FIRE ALARM SMOKE DETECTOR & SOUNDER SDA FIRE ALARM HEAT DETECTOR & SOUNDER FAC FIRE ALARM CONTROL PANEL CA FIRE ALARM BELL |
|---|--|--|

NOTE:
FIRE SAFETY SIGNS TO
COMPLY WITH BS 5499



Client
Aldi Foodstores Ltd



Project Title
Updated Fire Plan
#1
Whittlesey Road
Petterborough
PE2 8SQ

